



Private Samuel Mitchelmore
 Cemetery: Grave reference, I. I. 8.

His occupation prior to military service recorded as that of a *fisherman* earning a yearly four-hundred dollars, Samuel Mitchelmore was a volunteer of the Tenth Recruitment Draft. He presented himself to enlist on June 11 of 1916 – immediately after his cousin George - at the *Church Lads Brigade Armoury** in St. John's, capital city of the Dominion of Newfoundland and was thereupon engaged...*for the duration of the war***...at the daily private soldier's rate of a single dollar to which was to be appended a ten-cent per diem Field Allowance.

****The building was to serve as the Regimental Headquarters in Newfoundland for the duration of the conflict.***

*****At the outset of the War, perhaps because it was felt by the authorities that it would be a conflict of short duration, the recruits enlisted for only a single year. As the War progressed, however, this was obviously going to cause problems and the men were encouraged to re-enlist. Later recruits – as of or about May of 1916 - signed on for the 'Duration' at the time of their original enlistment.***

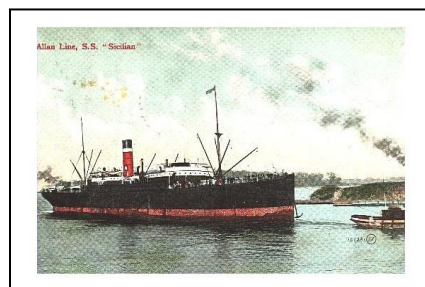
On the day following his enlistment, June 12, and at the same venue, Samuel Mitchelmore would now return to undergo the mandatory medical examination. It was a procedure which was to pronounce him as...*Fit for Foreign Service.*

Only a few further hours were now to follow before there then came to pass, once again at the *CLB Armoury* on Harvey Road, the final formality of his enlistment: attestation. Thus on the same twelfth day of that month of June he pledged his allegiance to the reigning monarch, George V, whereupon, at that moment, Samuel Mitchelmore became...*a soldier of the King.*

Private Mitchelmore, Number 2873, would not now sail to the United Kingdom until a lengthy period of eleven weeks had then elapsed. How he was to spend this prolonged interval after his attestation appears not to have been documented. It may be that he was to return temporarily to work and to spend time at his home in the community of Green Island Cove on the Straits of Belle Isle but, of course, this conclusion is a little bit speculative and he may well have chosen – or *been* chosen - to remain in barracks, although there was apparently little in the way of military training undertaken, to be billeted and trained in the capital city*.

****A number of the recruits, those whose home was not in St. John's or close to the capital city, or those who had no friends or family to offer them board and lodging, were to be quartered in the curling rink in the area of Fort William in St. John's, a building which was at the time to serve as barracks.***

It was on the SS *Sicilian* that Private Mitchelmore was to make the trans-Atlantic crossing to the United Kingdom, the third and final such voyage that the ship was to make in 1916. Private Mitchelmore was a soldier of Section 10, Platoon 11, 'C' (Reserve) Company of the 3rd Battalion (see * below), it being a draft of two-hundred forty-two personnel in all that was leaving for overseas service.



But he would be obliged to await the 28th day of August, well over two months after his attestation, before he would embark on the vessel for passage to the United Kingdom.

(Right above: *Some sixteen years previously - as of 1899 when 'Sicilian' was launched – the vessel had served as a troop-ship and transport carrying men, animals and equipment to South Africa for use during the Second Boer War. During the Great War she was apparently requisitioned as a troopship on only one occasion: in October of 1914 she was a vessel of the armada which transported the (1st) Canadian Division overseas to the*

United Kingdom. She otherwise continued to work commercially between Great Britain and Canada for her owners, the Allan Line and later Canadian Pacific, at times carrying soldiery if and when her schedule allowed.

***The 3rd Battalion was based in St. John's, whereas the 2nd (Reserve) Battalion – 'E', 'F', 'G' and 'H' Companies - was stationed in the United Kingdom. The 1st Battalion was the edge of the sword – 'A', 'B', 'C' and 'D' Companies – and as of August of 1915, had been posted to the Front, at first in Gallipoli then on the European continent (see further below).**

Upon the arrival of *Sicilian* in British waters, the ship proceeded to the south-coast Royal Naval port of Devonport where the first contingent of the Newfoundland Regiment had landed with the (1st) Canadian Division in October of 1914. Having arrived in port on or about September 9, from there Private Mitchelmore and his comrades-in-arms now boarded a train for the journey northwards to Scotland and to the Regimental Depot.



(Right above: **A no-longer bustling Devonport Harbour, today bereft of its former importance – photograph from 2012)**

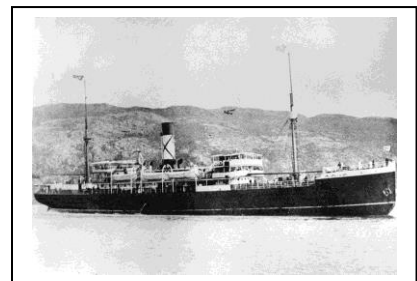
* * * * *

Some two years prior to that September 9 of 1916, in the late summer and early autumn of 1914, the newly-formed Newfoundland Regiment's first recruits had undergone a period of training of five weeks on the shores of *Quidi Vidi Lake* in the east end of St. John's and elsewhere in the city, and were formed into 'A' and 'B' Companies.

During that same period the various authorities had also been preparing for the Regiment's transfer overseas.

(Right below: **The image of 'Florizel' at anchor in the harbour at St. John's in October of 1914 is by courtesy of Admiralty House Museum.)**

This first Newfoundland contingent was to embark on October 3, in some cases only days after a recruit's enlistment and/ or attestation. To become known to history as the *First Five Hundred* and also as the *Blue Puttees*, on that day they had boarded the Bowring Brothers' vessel *Florizel* awaiting in St. John's Harbour.



The ship had sailed for the United Kingdom on the morrow, October 4, 1914, to its rendezvous with the convoy carrying the 1st Canadian Division overseas, off the south coast of the Island.

Once having disembarked in the United Kingdom this first Newfoundland contingent was to train in three venues during the late autumn of 1914 and then the winter of 1914-1915: firstly in southern England on the *Salisbury Plain*; then in Scotland at *Fort George* – on the *Moray Firth* close to Inverness; and lastly at *Edinburgh Castle* – where it was to provide the first garrison from outside the British Isles.

(Right: *Fort George, constructed in the latter half of the eighteenth century, still serves the British Army to this day. – photograph from 2011*)



Only days after 'A' and 'B' Companies had taken up their posting there, on February 16 of 1915, 'C' Company – the first re-enforcements for the original contingent - would arrive directly – through Liverpool of course - from Newfoundland. On the final day of the month of March it had been the turn of 'D' Company to arrive – they via Halifax as well as Liverpool – to report...*to duty...*at Edinburgh, and then 'E' Company five weeks less a day later again, on May 4*.



**These five Companies, while a contingent of the Newfoundland Regiment, was not yet a battalion and would not be so for a further five months – as will be seen below.*

(Right above: *The venerable bastion of Edinburgh Castle dominates the Scottish capital from its hill in the centre of the city. – photograph from 2011*)

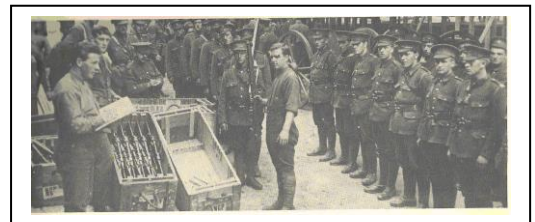
Seven days after the arrival of 'E' Company in the Scottish capital, on May 11 the entire Newfoundland contingent had been ordered elsewhere. On that day, seven weeks into spring – although in Scotland there was apparently still snow - the unit had been dispatched to *Stobs Camp*, all under canvas and south-eastwards of Edinburgh, close to the town of Hawick.

(Right: *The Newfoundland Regiment marches past on the training ground at Stobs Camp and is presented with its Colours on June 10, 1915. – by courtesy of Reverend Wilson Tibbo and of Mrs. Lillian Tibbo*)



Two months less a day later, on July 10, 'F' Company would march into *Stobs Camp*.

This had been an important moment: the Company's arrival was to bring the Newfoundland Regiment's numbers up to some fifteen hundred, establishment strength* of a battalion which could be posted on...*active service*.



**A number sufficient for four 'fighting' companies, two re-enforcement companies and a headquarters staff.*

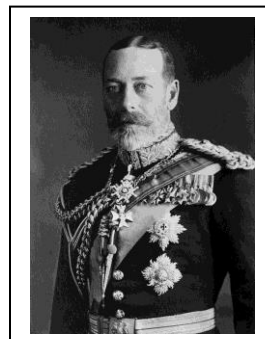
(Right above: *The men of the Regiment await their new Lee-Enfield rifles. – original photograph from the Provincial Archives*)

From *Stobs Camp*, some three weeks after the arrival of 'F' Company, in early August 'A', 'B', 'C' and 'D', the four senior Companies, having now become the 1st Battalion of the

Newfoundland Regiment, had been transferred to *Aldershot Camp* in southern England. There they were to undergo final preparations – and a royal inspection – before the Battalion’s departure to the Middle East and to the fighting on the *Gallipoli Peninsula*.

The later arrivals to the United Kingdom, ‘E’ and ‘F’ Companies, were to be posted to the new Regimental Depot and were eventually to form the nucleus of the soon to be formed 2nd (Reserve) Battalion of the Newfoundland Regiment.

(Right: *George V, by the Grace of God, of the United Kingdom of Great Britain and Ireland and of the British Dominions beyond the Seas, King, Defender of the Faith, Emperor of India* – the photograph is from *Bain News Services* via the *Wikipedia* web-site.)



(Right: *An aerial view of Ayr, likely from the period between the Wars: Newton-on-Ayr, where were quartered the ‘other ranks’, is to the left of the River Ayr and the Royal Borough, where were housed the officers, is to the right.* – by courtesy of the *Carnegie Library* at Ayr)



(Right below: *The High Street in Ayr as shown on a postcard of the time, the imposing Wallace Tower – it stands to this day (2017) - dominating the scene* – by courtesy of Reverend Wilson Tibbo and Mrs Lillian Tibbo.



Ayr was a small town on the west coast of Scotland whose history precedes the year 1205 when it was established as a Royal Burgh (Borough) by the crown of Scotland, an appointment which emphasized the importance of the town as a harbour, market and, later, administrative centre.

By the time of the Great War centuries later it was expanding and the River Ayr which had once marked the northern boundary of the place was now flowing through its centre; a new town to the north (Newton-on-Ayr), its population fast-increasing, perhaps encouraged by the coming of the railway, was soon to be housing the majority of the personnel of the Newfoundland Regimental Depot.

That November 15 of 1915 was to see not only the departure of the 1st Re-enforcement Draft from Ayr to the Middle East and to the fighting of the *Gallipoli Campaign* but also, only five days prior, the arrival from Newfoundland of ‘G’ Company which would be obliged to take up quarters at *Gailes Camp*, some sixteen kilometres up the coast from Ayr itself – but just over sixty if one went by road.

A further seven weeks plus a day were now to pass before the first one-hundred personnel of ‘H’ Company, having sailed in mid-December as recorded in an earlier paragraph, were to present themselves at the Regimental Depot on January 4, some of them to be affected, even fatally, by an ongoing measles epidemic of the time.

(continued)

After that there was then to be an interlude of three months plus several days before the second detachment of 'H' Company reported on April 9, 1916, to the Regimental Depot.

Note: Until as late as the spring of 1916 it had been the intention to form a 2nd Battalion of the Newfoundland Regiment to fight on the Continent. In fact it would seem that the last-mentioned contingent of one-hundred sixty-three recruits was to form the nucleus of that unit, while the personnel already at the Depot by this time would form a reserve battalion to serve as a re-enforcement pool for both the fighting units.

It could not have been long before a change of plan came about as very soon men of that designated contingent (the second half of 'H' Company) were being sent to strengthen the 1st Newfoundland Battalion already on the Continent – maybe Beaumont-Hamel had something to do with it.

A further draft from Newfoundland arrived at Ayr towards mid-summer, this comprising a two-company detachment and some naval reservists, sailors who, having disembarked from *Sicilian* in Devonport, were to remain there in England.

Some weeks later again, as seen in an earlier paragraph, *Sicilian* would sail from Newfoundland once more to arrive in England in the first week in September, 1916, with two-hundred forty-two recruits on board. By the 5th day of the month the new-comers – Private Mitchelmore among that number - had reported to the Regimental Depot.

* * * * *

The Regimental Depot had been established during the summer of 1915 in the Royal Borough of Ayr on the west coast of Scotland, and was to eventually serve as the base for the 2nd (Reserve) Battalion. It was from there – as of November of 1915 and up until January of 1918 – that the new-comers arriving from home were despatched in drafts, at first to *Gallipoli* and later to the *Western Front*, to bolster the four fighting companies of the 1st Battalion.

At the outset there had been problems at Ayr in accommodating all the new arrivals – plus men from other British regiments which were still being billeted in the area...and a measles epidemic which was to claim the life of several Regiment personnel – but by the spring of 1916, things had been satisfactorily settled: the officers were in Wellington Square in the town-centre of Ayr itself, and the *other ranks* had been billeted either at Newton Park School or in the grandstand or a tented camp at the newly-built racecourse at Newton-upon-Ayr – a suburb on the far side of the river.

(Right above: *Wellington Square* seen here almost a century after it hosted the officers of the Newfoundland Regiment – photograph from 2012)

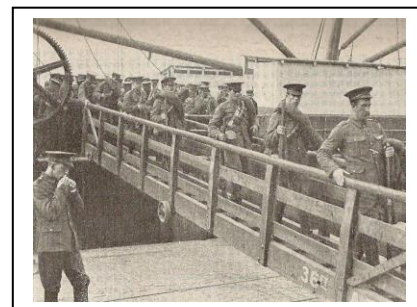
(continued)



(Preceding page: *The new race-course at Newton-upon-Ayr - opened in 1907 – where the men of the Regiment were sometimes billeted and where they replaced some of the turf with a vegetable garden; part of the present grandstand is original – photograph from 2012*)

Some eleven weeks after Private Mitchelmore had first reported to the Regimental Depot, the 14th Re-enforcement Draft from Ayr – he, Private Mitchelmore, one of its *rank and file* - passed through the English south-coast port of Southampton on November 30 of 1916 on its way to the Continent and to the *Western Front*. The contingent disembarked in the Norman capital of Rouen on the morrow, December 1, and spent time at the large British Expeditionary Force Base Depot located there, in final training and organization. The majority of its personnel then awaited the order of the despatch to join the parent Newfoundland Battalion...*in the field*.

(Right: *British troops disembark earlier in the War at Rouen on their way to the Western Front. – from Illustration*)



**Apparently, the standard length of time for this final training at the outset of the war had been ten days – although this was to become more and more flexible as the War progressed - in areas near Rouen, Étaples, LeHavre and Harfleur that became known notoriously to the troops as the Bull Rings.*

It was well into that month of December, the 11th or perhaps the 12th - by the time that Private Mitchelmore's draft of one-hundred seventy-three *other ranks* from Rouen reported...*to duty*...in the vicinity of Méricourt l'Abbé and that the aforementioned rendezvous was effected. It was a moment when the Newfoundland unit was on the move from the forward area to a site far to the rear where the Christmas period was to be spent.

* * * * *

By the time of Christmas of 1916, the first contingent of the Newfoundland Regiment, as seen above, had already been serving overseas for well over two years. The 2nd (Reserve) Battalion had been formed – in the spring of 1916 - and fourteen drafts had been dispatched from Ayr to supplement the strength of the 1st Battalion of the Newfoundland Regiment (see immediately below).

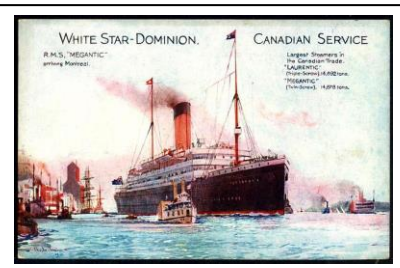


As for Samuel Mitchelmore, he had by December 12 been a soldier of the Newfoundland Regiment for one-hundred eighty-two days.

The four senior companies, 'A', 'B', 'C' and 'D', had become in the summer of 1915 the 1st Battalion of the Newfoundland Regiment and had thereupon been attached to the 88th Infantry Brigade of the 29th Division of the (British) Mediterranean Expeditionary Force. The force had soon been dispatched from *Camp Aldershot* to...*active service*.

(continued)

(Preceding page: *Some of the personnel of 'A', 'B', 'C' and 'D' Companies of the 1st Battalion of the Newfoundland Regiment at Aldershot in August of 1915, prior to its departure to active service on the Gallipoli Peninsula – from The Fighting Newfoundlander by Col. G.W.L. Nicholson, C.D.)*



(Right: *The image of Megantic, here in her peace-time colours of a 'White Star Line' vessel, is from the Old Ship Picture Galleries web-site.)*

On August 20 of 1915, the Newfoundland Battalion had embarked in the Royal Navy Harbour of Devonport onto the requisitioned passenger-liner *Megantic* for passage to the Middle East and to the fighting against the Turks.



(Right: *Newfoundland troops on board a troop-ship anchored at Mudros: either Megantic on August 29, Ausonia on September 18, or Prince Abbas on September 19 – Whichever the case, they were yet to land on Gallipoli. – from Provincial Archives)*

There, a month later – having spent some two weeks billeted in British barracks in the vicinity of the Egyptian capital, Cairo - on September 20, the 1st Battalion was to land at *Suvla Bay* on the *Gallipoli Peninsula*.



(Right above: *'Kangaroo Beach', where the officers and men of the 1st Battalion of the Newfoundland Regiment landed on the night of September 19-20, 1915, is to be seen in the distance at the far end of Suvla Bay. The remains of a landing-craft are still clearly visible in the foreground on 'A' Beach. – photograph taken in 2011)*

(Right below: *A century later, the area, little changed from those far-off days, of the Newfoundland positions at Suvla, and where the 1st Battalion was to serve during the fall of 1915 – photograph from 2011)*

When the Newfoundlanders had landed from their transport ship at *Suvla Bay* they were to disembark into a campaign that was already on the threshold of collapse.

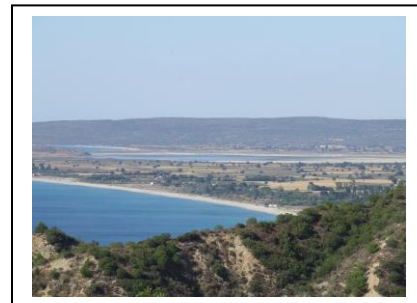


Not only in the area where the Newfoundland Battalion would now serve but, even ever since the very first days of the operation in April of 1915, the entire *Gallipoli Campaign*, including the operation at *Suvla Bay*, had been proving to be little more than a debacle:

Flies, dust, disease, the frost-bite and the floods – and of course the casualties inflicted by an enemy who was to fight a great deal better than the British High Command* had ever anticipated – were eventually to overwhelm the British-led forces and those of their allies,

the French, and it would finally be decided to abandon not only *Suvla Bay* but the entire *Gallipoli* venture.

**Many of the commanders chosen were second-rate, had been brought out of retirement, and had little idea of how to fight – let alone of how to win. One of the generals at Suvla, apparently, had handed in his resignation during the Campaign and had just gone home.*



(Right above: *This is Anzac Bay in the fore-ground with the Salt Lake in the centre further away. The bottom of Suvla Bay is just to be seen on the left and adjacent to the Salt Lake, and further away again. The hills in the distance and the ones from which this photograph was taken were held by the Turks and formed a horse-shoe around the plain surrounding the Salt Lake - which was where the British and Newfoundlanders were stationed. – photograph from 2011*)



(Right adjacent: *No-Man's-Land at Suvla Bay as seen from the Newfoundland positions – from Provincial Archives*)

November 26 would see what perhaps was to be the nadir of the Newfoundland Battalion's fortunes at *Gallipoli*; there was to be a freak rain, snow and ice-storm strike the *Suvla Bay* area and the subsequent floods had wreaked havoc amongst the forces of both sides. For several days, survival rather than the enemy was to be the priority.

There were to be many casualties on both sides, some of them, surprised by the sudden inundation of their positions, fatalities who had drowned in their trenches – although no Newfoundlanders were to be among that number.



(Right above: *An un-identified Newfoundland soldier in the trenches at Suvla Bay – from Provincial Archives*)

Numerous, however, had been those afflicted by trench-foot and by frost-bite.

By this time the situation there had daily been becoming more and more untenable, thus on the night of December 19-20, the British had abandoned the entire area of *Suvla Bay* – the Newfoundlanders, the only non-British unit to serve there, to form a part of the rear-guard.

Some of the Battalion personnel had thereupon been evacuated to the nearby island of *Imbros*, some to *Lemnos*, further away, but in neither case was the respite to be of a long duration; the 1st Battalion would be transferred only two days later to the area of *Cape Helles*, on the western tip of the *Gallipoli Peninsula*.



(continued)

(Preceding page: Cape Helles as seen from the Turkish positions on the misnamed Achi Baba, positions which were never breached: The Newfoundland positions were to the right-hand side of the picture. – photograph from 2011)

The British, Indian and Anzac forces – the Australian and New Zealand Army Corps was also to serve at Gallipoli – had by now simply been marking time until a complete withdrawal of the Peninsula could be undertaken.

This final operation would take place on the night of January 8-9, the Newfoundland Battalion to furnish part of the British rear-guard on this second occasion also.

(Right above: ‘W’ Beach at Cape Helles under shell-fire as it was only days before the final British evacuation – from Illustration)

***Lieutenant Owen Steele of St. John’s, Newfoundland, is cited as having been the last soldier of the Mediterranean Expeditionary Force to step into the final small boat to sail from the Gallipoli Peninsula.**



(Right above: ‘W’ Beach almost a century after its abandonment by British forces in that January of 1916 and by the Newfoundlanders who were to be the last soldiers off the beach: Vestiges of the wharves in the black-and-white picture are still to be seen. – photograph from 2011)

Immediately after the British evacuation of the Gallipoli Peninsula, the Newfoundland unit had been ordered to the Egyptian port-city of Alexandria and beyond.

On January 14, the Australian Expeditionary Force Transport *Nestor* had arrived there with the 1st Battalion on board. The vessel was to sail just after mid-day on the 16th, on its way southwards down the Suez Canal to Port Suez where she had docked early on the morrow and where the Newfoundlanders had landed and marched to their encampment.

There they were to await further orders since, at the time, the subsequent destination of the British 29th Division had yet to be decided*.

(Right: The image of the Blue Funnel Line vessel *Nestor* is from the Shipspotting.com web-site. The vessel was launched and fitted in 1912-1913 and was to serve much of her commercial life until 1950 plying the routes between Britain and Australia. During the Great War she served mainly in the transport of Australian troops and was requisitioned again in 1940 for government service in the Second World War. In 1950 she was broken up.)



***Bulgaria had entered the conflict on the side of the Central Powers, and Salonika was already becoming a theatre of war.**

(Right: *The British destroy their supplies during the final evacuation of the Gallipoli Peninsula. The men of the 1st Battalion of the Newfoundland Regiment were among the last to leave on two occasions, at both Suvla Bay and Cape Helles. – photograph taken from the battleship Cornwallis from Illustration*)



After a two-month interim spent in the vicinity of Port Suez, the almost six-hundred officers and *other ranks* of the 1st Battalion were to board His Majesty's Transport *Alaunia* at Port Tewfiq, on March 14 to begin the voyage back up through the *Suez Canal* en route to France.



(Right adjacent: *Port Tewfiq at the south end of the Suez Canal just prior to the Great War – from a vintage post-card*)

The Newfoundlanders would disembark eight days afterwards in the Mediterranean port-city of Marseille, on March 22.

(Right: *British troops march through the port area of the French city of Marseille. – from a vintage post-card*)

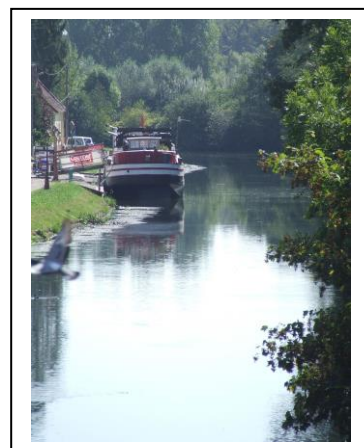


Some three days after the unit's disembarkation on March 22, the Newfoundland Battalion's train was to find its way to the small provincial town of Pont-Rémy, a thousand kilometres to the north of Marseille.

It had been a cold, miserable journey, the blankets provided for the troops having inexcusably travelled unused in a separate wagon.

Having de-trained at the local station at two o'clock in the morning, the Newfoundlanders were now still to endure the long, dark march ahead of them before they would reach their billets at Buigny l'Abbé.

(Right: *A languid River Somme as seen from the bridge at Pont-Rémy – photograph from 2010*)



It is doubtful if many of those tired soldiers were to pay much attention to the slow-moving stream flowing under the bridge which they had then traversed on their way from the station. But some three months later *the Somme* was to have become a part of their history.

On April 13, the entire 1st Battalion had subsequently marched into the village of Englebelmer – perhaps some fifty kilometres in all from Pont-Rémy - where it would be billeted, would receive re-enforcements from Scotland via Rouen and, in two days' time, would be introduced into the communication trenches of the *Western Front*.

(Right below: A part of the re-constructed trench system to be found in the Newfoundland Memorial Park at Beaumont-Hamel – photograph from 2009(?))

Just days following the Newfoundland Battalion's arrival on the *Western Front*, two of the four Companies – 'A', and 'B' – were to take over several support positions from a British unit* before the entire Newfoundland unit had then been ordered to move further up for the first time into forward positions on April 22.



****It should be said that the Newfoundland Battalion and two-hundred men of the Bermuda Rifles who were serving at the time in the 2nd Lincolnshire Regiment Battalion, were then the only units at the Somme from outside the British Isles - true also on the day of the attack on July 1.***

(Right: Beaumont-Hamel: Looking from the British lines down the hill to Y Ravine Cemetery which today stands atop part of the German front-line defences: The Danger Tree is to the right in the photograph. – photograph taken in 2009)



Having then been withdrawn at the end of that April to the areas of Mailly-Maillet and Louvencourt where they would be based for the next two months, the Newfoundlanders had soon been preparing for the upcoming British campaign of that summer, to be fought on the ground named for the languid, meandering river, *the Somme*, that flowed – and still does so today – through the region.

If there is one name and date in Newfoundland history which is etched in the collective once-national memory, it is that of Beaumont-Hamel on July 1 of 1916; and if any numbers are remembered, they are those of the eight-hundred who went *over the top* in the third wave of the attack on that morning, and of the sixty-eight unwounded present at muster some twenty-four hours later*.



(Right above: A view of Hawthorn Ridge Cemetery Number 2 in the Newfoundland Memorial Park at Beaumont-Hamel – photograph from 2009(?))

****Perhaps ironically, the majority of the Battalion's casualties was to be incurred during the advance from the third line of British trenches to the first line from where the attack proper was to be made, and while struggling through British wire laid to protect the British positions from any German attack.***

There are other numbers of course: the fifty-seven thousand British casualties incurred in four hours on that same morning of which nineteen-thousand were recorded as having been...*killed in action...or...died of wounds.*



(Preceding page: *A grim, grainy image purporting to be Newfoundland dead awaiting burial after Beaumont-Hamel – from...?*)

It was to be the greatest disaster ever in the annals of the British Army...and, perhaps just as depressing, the carnage of the...*First Battle of the Somme*...was to continue for four and a half months.

(Right: *Beaumont-Hamel is a commune, not a village. – photographs from 2010 & 2015*)

In fact, Beaumont-Hamel was a commune – it still exists today – at the time comprising two communities: Beaumont, a village on the German side of the lines, and Hamel which was behind those of the British. No-Man's-Land, on which the Newfoundland Memorial Park lies partially today, was on land that separated Beaumont from Hamel.



After the events of the morning of July 1, 1916, such had then been the dire condition of the attacking British forces that it had been feared that any German counter-assault might well annihilate what had managed to survive of the British Expeditionary Force on *the Somme*.

The few remnants of the Newfoundland Battalion – and of the other depleted British units – had thus remained in the trenches perhaps fearing the worst, and at night searching for the wounded and burying the dead. It was to be July 6 before the Newfoundlanders were to be relieved from the forward area and to be ordered withdrawn to Englebelmer.



There were then a further two days before the unit had marched further again to the rear area and to billets in the village of Mailly-Maillet.

(Right above: *The re-constructed village of Mailly-Maillet – the French Monument aux Morts in the foreground - is twinned with the community of Torbay, St. John's East. – photograph from 2009*)

There at Mailly-Maillet on July 11, a draft of one-hundred twenty-seven re-enforcements – a second source cites one-hundred thirty – had reported...*to duty*. They had been the first to arrive following the events at Beaumont-Hamel but even with this additional man-power, the Regimental War Diary records that on the 14th of July, 1916, the 1st Battalion was still to number only...*11 officers and 260 rifles*...after the holocaust of Beaumont-Hamel, just one-quarter of establishment battalion strength.

Of course, the 1st Battalion of the Newfoundland Regiment had not been the only unit in the British Army to have incurred horrific losses on July 1, 1916, even though it had indeed been one of the most devastated. But even with its depleted numbers, the Battalion was

needed and, after that first re-enforcement, it had almost immediately again been ordered to man the trenches of the front line: as of that July 14, undermanned as seen above, the Newfoundlanders began another tour in the trenches where... *we were shelled heavily by enemy's 5.9 howitzers and a good deal of damage was done to the trenches* (excerpt from the 1st Battalion War Diary).

A second re-enforcement draft from Rouen had then arrived days later, on July 21, while the Newfoundland Battalion was at Acheux and then, only three days afterwards – at the very time day that the Prime Minister of Newfoundland had visited the unit – a third draft of sixty other ranks had arrived in Beauval and reported... *to duty*.

On July 27-28 of 1916, the Newfoundland Battalion - still under establishment battalion strength at only five-hundred fifty-four strong – maybe even fewer - even after still further re-enforcement – would move northwards and enter into the *Kingdom of Belgium* for the first time.

(Right above: *The entrance to 'A' Company's quarters – obviously renovated since that time – sunk in the ramparts of the city of Ypres, when the Newfoundland Battalion was posted there in 1916 – photograph from 2010*)

(Right above: *The re-constructed ramparts shown above here viewed from just outside the city and from the far side of the moat which still partially surrounds it – image from 2010*)

The unit had been ordered to the *Ypres Salient*, one of the most dangerous pieces of real estate on the entire *Western Front*, there to continue to re-enforce and to re-organize after the ordeal of Beaumont-Hamel.

(Right above: *Canadian trenches in Sanctuary Wood, not far removed from the Newfoundland Battalion's positions during August and September of 1916 – photograph from 2010*)

The Salient – close to the front lines for almost the entire fifty-two month conflict - was to be relatively quiet during the time of the Newfoundlanders' posting there; yet they nonetheless would incur casualties, a number – fifteen? - of them fatal.

And it was to be there in *the Salient* in the sector of a place called *Railway Wood*, that the Newfoundland Battalion would soon be serving after its transfer completed from France.

(Right: *Railway Wood, the Newfoundland positions at the time, almost a century later – a monument to the twelve Royal Engineers buried alive there may just be perceived on the periphery of the trees – photograph from 2014*)



(Right: *The already-battered city of Ypres seen here towards the end of the year 1915 – and some eight months before the Newfoundlanders were to be posted there for the first time – from a vintage post-card*)



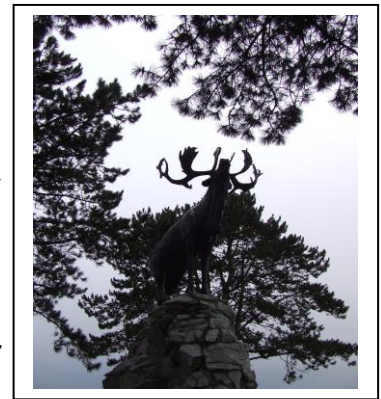
On October 8, 1916, after having served in Belgium for some ten weeks, the Newfoundland Battalion had been ordered to return southwards. The unit was thereupon to be transported by train back into France, back into the area of the...*First Battle of – the Somme.*



Just four days after unit's return to France from Belgium, on October 12 of 1916, the 1st Battalion of the Newfoundland Regiment had again been ordered to take to the offensive; it was at a place called Gueudecourt, the vestiges of a village some dozen or so kilometres to the south-east of Beaumont-Hamel.

The encounter was to prove to be another ill-conceived and costly affair – two hundred and thirty-nine casualties all told - for little gain.

(Right above: *This is the ground over which the 1st Battalion advanced and then mostly conceded at Gueudecourt on October 12. Some few managed to reach the area where today stand the copse of trees and the Gueudecourt Caribou, on the far right horizon. – photograph from 2007*)



(Right: *The Caribou at Gueudecourt stands at the furthest point of the Newfoundland Battalion's advance of October 12, 1916. – photograph from 2012*)

The Newfoundland Battalion was not then to be directly involved in any further concerted infantry action in the immediate area of Gueudecourt although, on October 18, it had furnished two-hundred fifty men to act as stretcher-bearers in an attack undertaken by troops of two British regiments, the Hampshires and the Worcestershires, of the 88th Infantry Brigade of which, of course, the Newfoundland unit was a battalion.

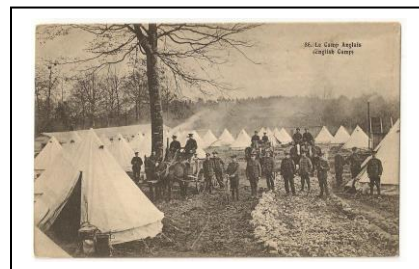


(Right above: *Stretcher-bearers not only shared the dangers of the battle-field with their arms-bearing comrades, but they often spent a longer period of time exposed to those same perils. This photograph was likely taken during First Somme. – from Illustration*)

On October 30, the Newfoundland unit had eventually retired to rear positions from the Gueudecourt area. It had been serving continuously in front-line and support positions for three weeks less a day.

The Newfoundlanders were now to spend two weeks retired to the area of Ville-sous-Corbie, re-enforcing and reorganizing. It was not to be until November 15 that the Battalion had started to wend its way back to the front lines.

Back at *the Front* the Newfoundland unit continued its watch in and out of the trenches of *the Somme* – not without casualties, almost all likely due to enemy artillery – during the late fall and early winter. It was to be a period interrupted only by another several weeks spent in *Corps Reserve* during the Christmas season, encamped well behind the lines and in close proximity to the city of Amiens.



(Right above: A typical British Army Camp during rather inclement winter conditions somewhere on the Continent – from a vintage post-card)

The parent unit had therefore begun to retire in anticipation thereof once again from *the Front* on December 8, although a goodly number of its personnel, two-hundred-sixty *other ranks* - more than fifty per cent of its strength at the time - was to be seconded on December 11 for several days' work at Carnoy and at Fricourt.

Those spared this secondment continued their withdrawal onwards to Méricourt l'Abbé which is where the one-hundred seventy-three *other ranks* from the Base Depot in Rouen – Private Mitchelmore among that number – had reported...*to duty*. The newcomers were thus just in time for the above-mentioned six-week interval now to be spent in quarters at *Camps-en-Amienois*.

Life on the *Western Front* was not, however, always going to be as easy as that for Private Mitchelmore and Co..

* * * * *

The Christmas festivities having been completed – turkey dinner washed down with...*real ale*...apparently – it was not to be until a further sixteen days had passed, January 11, that the Newfoundland Battalion would be ordered out of *Corps Reserve* and from its lodgings at *Camps en Amienois* to make its way on foot to the town of Airaines.

From the railway station there it then entrained for the small town of Corbie where it thereupon took over billets which it already occupied for a short period only two months before. Days later again the unit continued its progress back up to the forward area and to...*active service*.

Their recent six-week Christmas respite spent far to the rear by then a thing of the past, the Newfoundlanders were to *officially* return to...*active service*...on January 23, although they apparently had already returned to the trenches by that date and had incurred their first casualties – and fatalities – of 1917.

It was then the beginning of the winter period. As had been and was to be the case of all the winter periods of the *Great War* – that of 1916-1917 would be a time of relative calm, although cold and uncomfortable – there was to be a shortage of fuel and many other things - for most of the combatants of both sides.

It was also to be a time of sickness, and the medical facilities were to be kept busy, particularly, so it seems - from at least Canadian medical documentation - with thousands of cases of dental work.

This period also provided the opportunity to undergo training and familiarization with the new practices and the recent weaponry of war; in the case of the Newfoundland Battalion these exercises were to be at least partially undertaken in the vicinity of the communities of Carnoy and Coisy.

On February 18 the 1st Battalion began a five-day trek back from Coisy to the forward area where it was to return to the firing-line on February 23, relieving a unit of the 1st Lancashire Fusiliers. It was at a place called Saily-Saillisel and the reception given to it by the Germans proved both lively – and deadly: after only two days the Battalion had incurred four dead, nine wounded and three gassed without there having been any infantry action. The Newfoundlanders were to be withdrawn on February 25...to return just three days later.

They were carrying with them orders for a...*bombing raid*...on the enemy positions at Saily-Saillisel...to be carried out on March 1.

(Right: *A soldier of the Lancashire Fusiliers, his unit to be relieved by the Newfoundlanders on March 1, enjoys his cigarette in the cold of the trenches at Saily-Saillisel during the winter of 1916-1917. – from Illustration*)



The aforesaid planned raid of the German positions at Saily-Saillisel was to go ahead a little later than scheduled as it appears that the enemy had made similar plans. The reciprocal infantry action(s) thus were ongoing for the better part of two days, on both March 2 and 3.

(Right below: *The fighting during the period of the Battalion's posting to Saily-Saillisel took place on the far side of the village which was no more than a heap of rubble at the time. - photograph from 2009(?)*)



In fact, the sole infantry activity which was to *directly* involve the Newfoundland unit during that entire period – from the action at Gueudecourt in mid-October, 1916, until Monchy-le-Preux in mid-April of 1917 – was to be *that* sharp engagement fought at Saily-Saillisel at the end of February and the beginning of March, an action which would bring this episode in the Newfoundlanders' War – in the area of *the Somme* - to a close.

That March 3 had been the final day of the 1st Battalion's involvement at Saily-Saillisel. It had also been a day of fierce fighting which had begun in the morning at seven o'clock with a heavy enemy artillery bombardment; this was to be a prelude to hours of attacks and counter-attacks which would conclude with the Newfoundlanders advancing and then capturing forty or so metres of what had been a German-held trench.

Casualties on the day: six *other ranks* killed, twenty-seven *all ranks* wounded.

One of those having incurred injuries – no further details appear to have been recorded – had been Private Mitchelmore, serving with ‘C’ Company at the time. He was thereupon evacuated on that same day to the 60th Field Ambulance for treatment.

The son of Thomas (former fisherman, deceased of tuberculosis on February 19, 1908) and of Mary Mitchelmore (née *Coombs**) – to whom he had allotted a daily sixty cents from his pay - of Green Island Cove in the Straits of Belle Isle, he was also brother to Mary-Frances, Sarah, Evangeline, Henry, Joanna, Myrtle and to perhaps either George or Susannah – recorded as born seven months apart in 1887.

**The couple was married in the community of Flower’s Cove on September 18 of 1881.*

Private Mitchelmore was reported as having...*died of wounds*...on March 3, 1917, in the aforementioned 60th FA. At home, it was the Reverend J. T. Richards of Green Island Cove who was requested to bear the news to his family.

He was buried in a...*grave one mile SW of Guillemont & 2 miles W of Combles*...whence his remains were later moved to where they rest today.



Samuel Mitchelmore had enlisted at the *declared* age of twenty-three years and five months: date of birth in Green Island Cove, Newfoundland, June 19, 1895 (from the *North American Church Records* web-site as is most of the other family information).

**The couple was married on November 8, 1892; however, the marriage was not registered until June 17 of 1895. After the death of Mary, Austin may have remarried, on this second occasion to Selina Stevens on January 2, 1908.*

Two cousins were to serve in the 1st Battalion of the Newfoundland Regiment: #2872, Private George Mitchelmore, *missing in action*...then after only four days re-recorded as having been...*killed in action*...on April 23, 1917, at *Les Fosses Farm*; and also #1810, Private Isaac Mitchelmore, reported as...*missing in action*...on October 12, 1916, during the assault at Gueudecourt during the...*First Battle of the Somme*. Some thirty weeks later, on or about May 4, 1917, he was officially...*presumed dead*.



(Right above: *This War Memorial, erected by the Mitchelmore Members Branch Number 55 to honour the sacrifice of those from Labrador and the District of St. Barbe, stands by the side of the Northern Peninsula Highway. – photograph from 2020 – with thanks to Wade Greeley who noticed it.*)

(continued)

(Right above: A Calvaire at a crossroads not far distant from Sailly-Saillisel is still a collecting point for munitions – to be seen against the base - ploughed up a century later and waiting for the French Army Bomb Disposal personnel. - photograph from 2007)

Private Samuel Mitchelmore was entitled to the British War Medal (on left) and also to the Victory Medal (Inter-Allied War Medal).



The above dossier has been researched, compiled and produced by Alistair Rice. Please email any suggested amendments or content revisions if desired to criceadam@yahoo.ca. Last updated – February 2, 2023.