



Private Isaac Mitchelmore (Regimental Number 1810), having no known last resting-place, is commemorated on the bronze beneath the Caribou in the Newfoundland Memorial Park at Beaumont-Hamel.

His occupation prior to military service recorded as that of a *fisherman*, he was a recruit of the Sixth Draft. Isaac Mitchelmore presented himself at the *Church Lads Brigade Armoury* in St. John's, capital city of the Dominion of Newfoundland, on September 3 of 1915 for a medical examination. It was a procedure which was to pronounce him as being...*fit for Foreign Service*.



On the same day as that medical assessment, September 3, and at the same venue, the *CLB Armoury* on Harvey Road, he was next to enlist. Isaac Mitchelmore was thereupon to be engaged at the daily private soldier's rate of a single dollar, to which was to be added a ten-cent per diem Field Allowance.

And it was then perhaps to be either only hours afterwards again or on the morrow that there then came the final formality of his enlistment: attestation. On either September 3 or 4 he pledged his allegiance to the reigning monarch, George V, at which moment Isaac Mitchelmore became...*a soldier of the King*.

A further, and lengthier, waiting-period was now in store for the recruits of this draft, designated as 'G' Company, before they were to depart from Newfoundland for...*overseas service*.

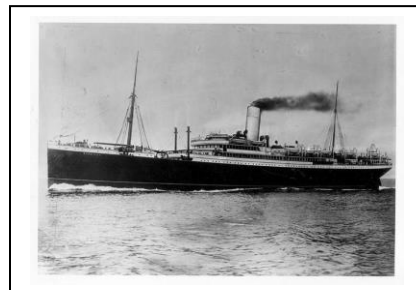
Private Mitchelmore, Regimental Number 1810, was not to be called upon until October 27, after a period of some seven weeks. Where he was to spend this intervening time appears not to have been recorded although he may just possibly have returned to work, and *perhaps* even travelled to visit his mother and friends at his home at Green Island Cove in the District of St. Barbe – all of which is, however, only speculation.

On the above-mentioned October 27, 'G' Company left St. John's by train to cross the island to Port aux Basques, the other passengers on board reportedly having included several naval reservists and also some German prisoners-of-war. The contingent then traversed the Gulf of St. Lawrence by ferry – the ship documented as having been the *Kyle* - and afterwards proceeded again by train from North Sydney as far as Québec City.

(continued)

There the Newfoundlanders joined His Majesty's Transport *Corsican* for the trans-Atlantic voyage to the English south-coast naval establishment of Devonport where they arrived on November 9. The vessel had departed Montreal on October 30 with Canadian troops on board before stopping at Québec: the 55<sup>th</sup> Canadian Infantry Battalion and the Second Draft of the (1<sup>st</sup>?) Divisional Signals Company.

(Right: *The image of Corsican is from the Old Ship Picture Galleries web-site. Launched in 1907 for the Allan Line, one of the largest private shipping companies of the time, she spent much of her early career chartered to the Canadian Pacific Line which in 1917 was to purchase the entire Allan Line business. She was employed as a troop-ship during much of the Great War which she survived – only to be wrecked near Cape Race on May 21, 1923.*)



By the morning of November 10, Private Mitchelmore's 'G' Company had again travelled by train, to Scotland where it had been billeted in huts in a military camp at Gales, not far removed from the evolving Newfoundland Regimental Depot at Ayr where accommodation for the new arrivals was as yet not available.

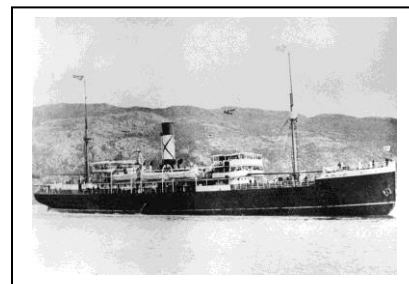
(Right: *The once-busy Royal Navy facility and harbour of Devonport almost a century after the Great War – photograph from 2012(?)*)



\* \* \* \* \*

More than a year prior to that November 10 of 1915, in the late summer and early autumn of 1914, the newly-formed Newfoundland Regiment's first recruits had undergone a period of training of five weeks on the shores of *Quidi Vidi Lake* in the east end of St. John's and elsewhere in the city, and were formed into 'A' and 'B' Companies.

During that same period the various authorities had also been preparing for the Regiment's transfer overseas.



(Right above: *The image of 'Florizel' at anchor in the harbour at St. John's is by courtesy of Admiralty House Museum.*)

This first Newfoundland contingent was to embark on October 3, in some cases only days after a recruit's enlistment and/ or attestation. To become known to history as the *First Five Hundred* and also as the *Blue Puttees*, on that day they had boarded the Bowring Brothers' vessel *Florizel* awaiting in St. John's Harbour.

The ship had sailed for the United Kingdom on the morrow, October 4, 1914, to its rendezvous with the convoy carrying the 1<sup>st</sup> Canadian Division overseas, off the south coast of the Island.

(Right below: *Fort George, constructed in the latter half of the eighteenth century, still serves the British Army to this day. – photograph from 2011*)

Once having disembarked\* in the United Kingdom this first Newfoundland contingent was to train in three venues during the late autumn of 1914 and then the winter of 1914-1915: firstly in southern England on the *Salisbury Plain*; then in Scotland at *Fort George* – on the *Moray Firth* close to Inverness; and lastly at *Edinburgh Castle* – where it was to provide the first garrison from outside the British Isles.



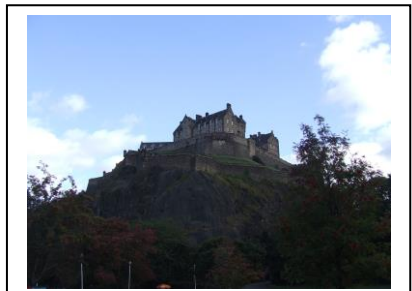
*\*It was to do so at Devonport through which 'G' Company was to pass eleven months later.*

Only days after 'A' and 'B' Companies had taken up their posting there, on February 16 of 1915, 'C' Company – the first re-enforcements for the original contingent - would arrive directly – through Liverpool of course - from Newfoundland. On the final day of the month of March it had been the turn of 'D' Company to arrive – they via Halifax as well as Liverpool – to report...to duty...at Edinburgh, and then 'E' Company five weeks less a day later again, on May 4\*.

*\*These five Companies, while a contingent of the Newfoundland Regiment, was not yet a battalion and would not be so for a further five months – as will be seen below.*

(Right below: *The venerable bastion of Edinburgh Castle dominates the Scottish capital from its hill in the centre of the city. – photograph from 2011*)

Seven days after the arrival of 'E' Company in the Scottish capital, on May 11 the entire Newfoundland contingent had been ordered elsewhere. On that day, seven weeks into spring – although in Scotland there was apparently still snow - the unit had been dispatched to *Stobs Camp*, all under canvas and south-eastwards of Edinburgh, close to the town of Hawick.



(Right: *The Newfoundland Regiment marches past on the training ground at Stobs Camp and is presented with its Colours on June 10, 1915. – by courtesy of Reverend Wilson Tibbo and of Mrs. Lillian Tibbo*)

Two months less a day later, on July 10, 'F' Company would march into *Stobs Camp*.



This had been an important moment: the Company's arrival was to bring the Newfoundland Regiment's numbers up to some fifteen hundred, establishment strength\* of a battalion which could be posted on...active service.

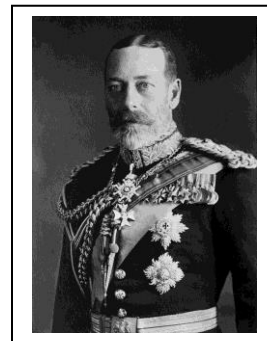


*\*A number sufficient to furnish four 'fighting' companies, two re-enforcement companies and a headquarters staff.*



(Preceding page: *The men of the Regiment await their new Lee-Enfield rifles.* – original photograph from the *Provincial Archives*)

From *Stobs Camp*, some three weeks after the arrival of 'F' Company, in early August 'A', 'B', 'C' and 'D', the four senior Companies, having now become the 1<sup>st</sup> Battalion of the Newfoundland Regiment, had been transferred to *Aldershot Camp* in southern England. There they were to undergo final preparations – and a royal inspection – before the Battalion's departure to the Middle East and to the fighting on the *Gallipoli Peninsula*.



(Right above: *George V, by the Grace of God, of the United Kingdom of Great Britain and Ireland and of the British Dominions beyond the Seas, King, Defender of the Faith, Emperor of India* – the photograph is from *Bain News Services* via the *Wikipedia* web-site.)

The later arrivals to the United Kingdom, 'E' and 'F' Companies, were to be posted to the new Regimental Depot and were eventually to form the nucleus of the soon to be formed 2<sup>nd</sup> (Reserve) Battalion of the Newfoundland Regiment.

(Right: *An aerial view of Ayr, likely from the period between the Wars: Newton-on Ayr, where were quartered the 'other ranks', is to the left of the River Ayr and the Royal Borough, where were housed the officers, is to the right.* – by courtesy of the *Carnegie Library at Ayr*)



(Right below: *The High Street in Ayr as shown on a postcard of the time, the imposing Wallace Tower – it stands to this day (2017) - dominating the scene* – by courtesy of Reverend Wilson Tibbo and Mrs Lillian Tibbo.



The Regimental Depot had been established during the summer and the early autumn of 1915 in the Royal Borough of Ayr on the west coast of Scotland, there to serve as a base for the newly-forming 2<sup>nd</sup> (Reserve) Battalion. It was from there – as of November of 1915 – that the new-comers were sent in drafts, at first to Gallipoli and then subsequently to the Western Front, to bolster the four fighting companies of 1<sup>st</sup> Battalion\*.

*\*The first such draft was, in fact, to depart from the Regimental Depot for service on the Gallipoli Peninsula only days after the arrival in Scotland of Private Mitchelmore's 'G' Company, on November 15.*

This then had been the situation at the time of Private Mitchelmore's arrival there: the new Regimental Depot had still been in the throes of its establishment when he and his comrades-in-arms of 'G' Company were to finish their journey to Scotland on November 10 of 1915; thus, as related in a preceding paragraph, the new-comers were required to be quartered at Gailes, some sixteen kilometres further up the coast – but apparently more than sixty kilometres distant by road.

Fairly early on while in Scotland, Private Mitchelmore would spend time - from February 8 until March 31 – in the *Bladda Infectious Disease Hospital* at Paisley, then in St. Mary's Convalescent Home, and finally as well in the Fever Hospital, Lanark, during the measles epidemic of that period. Several other personnel of the Regiment were also to be infected, some of whom unfortunately were eventually to succumb to the disease.

It was also to be more than two months later during this posting to Ayr that Private Mitchelmore re-enlisted...*for the duration of the war...*, signing the form to that effect on June 20\*, 1916, only days before being dispatched. By that time he had already seen the departure of the first six re-enforcement drafts from Ayr: the First directly to *Gallipoli*; the Second which had sailed to Egypt before being turned back to land in France; and the Third which had sailed straight to France only a week and a day beforehand.

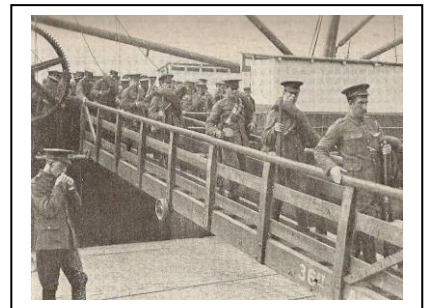
Those which had subsequently sailed – and which were to later on – also went directly to the Continent.

*\*At the outset of the War, perhaps because it was felt by the authorities that it would be a conflict of short duration, the recruits enlisted for only a single year. As the War progressed, however, this was obviously going to cause problems and the men were encouraged to re-enlist. Later recruits signed on for the 'Duration' at the time of their original enlistment.*

Private Mitchelmore had not been selected to serve in any of the first six drafts; he was to have been posted in Scotland for some seven months before his turn would come. When it *did* come, his draft would be dispatched directly to France.

(Right below: *British troops disembark at an earlier time of the Great War at Rouen en route to the Western Front. – from Illustration*)

On June 25 the 7<sup>th</sup> Re-enforcement Draft from Ayr passed through the English south-coast port of Southampton en route to the Continent, Private Mitchelmore among its ranks. On the morrow, the 26<sup>th</sup>, the detachment disembarked in Rouen, capital city of Normandy, and site of the large British Expeditionary Force Base Depot. There the draft was to spend several days undergoing final training and organization\* before proceeding to its rendezvous with the Newfoundland Battalion, it just having experienced the maelstrom of a place called Beaumont-Hamel.



*\*Apparently the standard length of time for this final training at the outset of the war had been ten days – although this was to become more and more flexible as the War progressed - in areas near Rouen, Étaples, LeHavre and Harfleur that became known notoriously to the troops as the Bull Rings.*

He would join the Newfoundland unit...*in the field...* on July 11-12.

\* \* \* \* \*

(continued)

A year prior to this juncture taking place in Belgium, in the early summer of 1915, the Regimental Depot in Scotland had only just been beginning to evolve: both 'E' and 'F' Companies had only then been beginning their period of training there at Ayr; as for Isaac Mitchelmore, he was as yet still at home awaiting enlistment and attestation, and he still had some two months to wait before the call was to come to sail overseas to the United Kingdom.

The aforementioned four senior companies, 'A', 'B', 'C' and 'D', of the Newfoundland Regiment, having now become the 1<sup>st</sup> Battalion had at this same time been attached to the 88<sup>th</sup> Infantry Brigade of the 29<sup>th</sup> Division of the (British) Mediterranean Expeditionary Force and had been dispatched to...active service.



(Right above: *Some of the personnel of 'A', 'B', 'C' and 'D' Companies of the 1<sup>st</sup> Battalion of the Newfoundland Regiment at Aldershot in August of 1915, prior to its departure to active service on the Gallipoli Peninsula – from The Fighting Newfoundlander by Col. G.W.L. Nicholson, C.D.)*

(Right: *The image of Megantic, here in her peace-time colours of a 'White Star Line' vessel, is from the Old Ship Picture Galleries web-site.)*



On August 20 of 1915, the Newfoundland Battalion had embarked in the Royal Navy Harbour of Devonport onto the requisitioned passenger-liner *Megantic* for passage to the Middle East and to the fighting against the Turks. There, a month later – having spent some two weeks billeted in British barracks in the vicinity of the Egyptian capital, Cairo - on September 20, the 1<sup>st</sup> Battalion was to land at *Suvla Bay* on the *Gallipoli Peninsula*.



(Right above: *'Kangaroo Beach', where the officers and men of the 1<sup>st</sup> Battalion of the Newfoundland Regiment landed on the night of September 19-20, 1915, is to be seen in the distance at the far end of Suvla Bay. The remains of a landing-craft are still clearly visible in the foreground on 'A' Beach. – photograph taken in 2011)*

(Right adjacent: *Newfoundland troops on board a troop-ship anchored at Mudros: either Megantic on August 29, Ausonia on September 18, or Prince Abbas on September 19 – Whichever the case, they were yet to land on Gallipoli. – from Provincial Archives)*



(continued)



(Right: *A century later, the area, little changed from those far-off days, of the Newfoundland positions at Suvla, and where the 1<sup>st</sup> Battalion was to serve during the fall of 1915 – photograph from 2011*)



When the Newfoundlanders had landed from their transport ship at *Suvla Bay* they were to disembark into a campaign that was already on the threshold of collapse.

Not only in the area where the Newfoundland Battalion would now serve but, even ever since the very first days of the operation in April of 1915, the entire *Gallipoli Campaign*, including the operation at *Suvla Bay*, had been proving to be little more than a debacle:

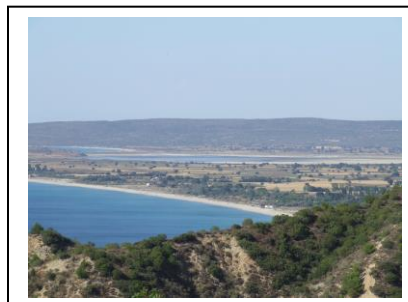
Flies, dust, disease, the frost-bite and the floods – and of course the casualties inflicted by an enemy who was to fight a great deal better than the British High Command\* had ever anticipated – were eventually to overwhelm the British-led forces and those of their allies, the French, and it would finally be decided to abandon not only *Suvla Bay* but the entire *Gallipoli* venture.



(Right: *An un-identified Newfoundland soldier in the trenches at Suvla Bay – from Provincial Archives*)

*\*Many of the commanders chosen were second-rate, had been brought out of retirement, and had little idea of how to fight – let alone of how to win. One of the generals at Suvla, apparently, had handed in his resignation during the Campaign and had just gone home.*

(Right: *This is Anzac Bay in the fore-ground with the Salt Lake in the centre further away. The bottom of Suvla Bay is just to be seen on the left and adjacent to the Salt Lake, and further away again. The hills in the distance and the ones from which this photograph was taken were held by the Turks and formed a horse-shoe around the plain surrounding the Salt Lake - which was where the British and Newfoundlanders were stationed. – photograph from 2011*)



(Right: *No-Man's-Land at Suvla Bay as seen from the Newfoundland positions – from Provincial Archives*)

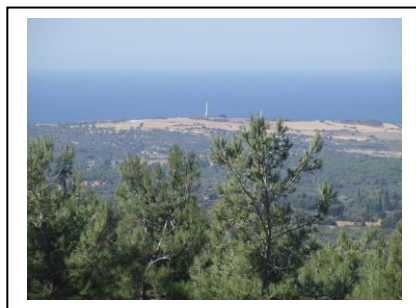
November 26 would see what perhaps was to be the nadir of the Newfoundland Battalion's fortunes at *Gallipoli*; there was to be a freak rain, snow and ice-storm strike the *Suvla Bay* area and the subsequent floods had wreaked havoc amongst the forces of both sides. For several days, survival rather than the enemy was to be the priority.



There were to be many casualties on both sides, some of them, surprised by the sudden inundation of their positions, fatalities who had drowned in their trenches – although no Newfoundlanders were to be among that number.

Numerous, however, had been those afflicted by trench-foot and by frost-bite.

By this time the situation there had daily been becoming more and more untenable, thus on the night of December 19-20, the British had abandoned the entire area of *Suvla Bay* – the Newfoundlanders, the only non-British unit to serve there, to form a part of the rear-guard.



Some of the Battalion personnel had thereupon been evacuated to the nearby island of Imbros, some to Lemnos, further away, but in neither case was the respite to be of a long duration; the 1<sup>st</sup> Battalion would be transferred only two days later to the area of *Cape Helles*, on the western tip of the *Gallipoli Peninsula*.

(Right above: *Cape Helles as seen from the Turkish positions on the misnamed Achi Baba, positions which were never breached: The Newfoundland positions were to the right-hand side of the picture.* – photograph from 2011)

The British, Indian and *Anzac* forces – the Australian and New Zealand Army Corps was also to serve at *Gallipoli* – had by now simply been marking time until a complete withdrawal of the *Peninsula* could be undertaken.



(Right above: *'W' Beach at Cape Helles under shell-fire as it was only days before the final British evacuation* – from *Illustration*)

This final operation would take place on the night of January 8-9, the Newfoundland Battalion to furnish part of the British rear-guard on this second occasion also.

*\*Lieutenant Owen Steele of St. John's, Newfoundland, is cited as having been the last soldier of the Mediterranean Expeditionary Force to step into the final small boat to sail from the Gallipoli Peninsula.*



(Right above: *'W' Beach almost a century after its abandonment by British forces in that January of 1916 and by the Newfoundlanders who were to be the last soldiers off the beach: Vestiges of the wharves in the black-and-white picture are still to be seen.* – photograph from 2011)

Immediately after the British evacuation of the *Gallipoli Peninsula*, the Newfoundland unit had been ordered to the Egyptian port-city of Alexandria and beyond.

On January 14, the Australian Expeditionary Force Transport *Nestor* had arrived there with the 1<sup>st</sup> Battalion on board. The vessel was to sail just after mid-day on the 16<sup>th</sup>, on its way southwards down the Suez Canal to Port Suez where she had docked early on the morrow and where the Newfoundlanders had landed and marched to their encampment.

(continued)



There they were to await further orders since, at the time, the subsequent destination of the British 29<sup>th</sup> Division had yet to be decided\*.

(Right: *The image of the Blue Funnel Line vessel Nestor is from the Shipspotting.com web-site. The vessel was launched and fitted in 1912-1913 and was to serve much of her commercial life until 1950 plying the routes between Britain and Australia. During the Great War she served mainly in the transport of Australian troops and was requisitioned once again in 1940 for government service in the Second World War. In 1950 she was broken up.*)



*\*Bulgaria had entered the conflict on the side of the Central Powers, and Salonika was already becoming a theatre of war.*

(Right: *The British destroy their supplies during the final evacuation of the Gallipoli Peninsula. The men of the 1<sup>st</sup> Battalion of the Newfoundland Regiment were among the last to leave on two occasions, at both Suvla Bay and Cape Helles. – photograph taken from the battleship Cornwallis from Illustration)*



After a two-month interim spent in the vicinity of Port Suez, the almost six-hundred officers and *other ranks* of the 1<sup>st</sup> Battalion were to board His Majesty's Transport *Alaunia* at Port Tewfiq, on March 14 to begin the voyage back up through the *Suez Canal* en route to France.



(Right above: *Port Tewfiq at the south end of the Suez Canal just prior to the Great War – from a vintage post-card)*

The Newfoundlanders would disembark eight days afterwards in the Mediterranean port-city of Marseille, on March 22.

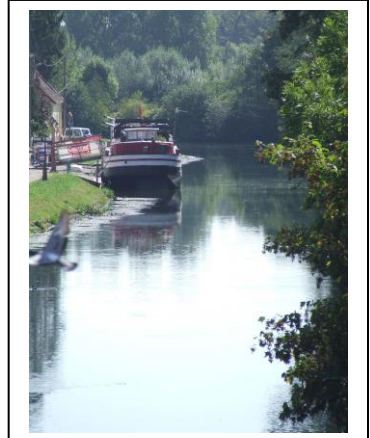
(Right: *British troops march through the port area of the French city of Marseille. – from a vintage post-card)*



Some three days after the unit's disembarkation on March 22, the Newfoundland Battalion's train was to find its way to the small provincial town of Pont-Rémy, a thousand kilometres to the north of Marseille.

It had been a cold, miserable journey, the blankets provided for the troops having inexcusably travelled unused in a separate wagon.

Having de-trained at the local station at two o'clock in the morning, the Newfoundlanders were now still to endure the long, dark march ahead of them before they would reach their billets at Buigny l'Abbé.



(Preceding page: *A languid River Somme as seen from the bridge at Pont-Rémy – photograph from 2010*)

It is doubtful if many of those tired soldiers were to pay much attention to the slow-moving stream flowing under the bridge which they had then traversed on their way from the station. But some three months later *the Somme* was to have become a part of their history.

On April 13, the entire 1<sup>st</sup> Battalion had subsequently marched into the village of Englebelmer – perhaps some fifty kilometres in all from Pont-Rémy - where it would be billeted, would receive re-enforcements from Scotland via Rouen and, in two days' time, would be introduced into the communication trenches of the *Western Front*.



(Right: *A part of the re-constructed trench system to be found in the Newfoundland Memorial Park at Beaumont-Hamel – photograph from 2009(?)*)

Just days following the Newfoundland Battalion's arrival on the *Western Front*, two of the four Companies – 'A', and 'B' – were to take over several support positions from a British unit\* before the entire Newfoundland unit had then been ordered to move further up for the first time into forward positions on April 22.

*\*It should be said that the Newfoundland Battalion and two-hundred men of the Bermuda Rifles who were serving at the time in the 2<sup>nd</sup> Lincolnshire Regiment Battalion, were then the only units at the Somme from outside the British Isles - true also on the day of the attack on July 1.*



(Right: *Beaumont-Hamel: Looking from the British lines down the hill to Y Ravine Cemetery which today stands atop part of the German front-line defences: The Danger Tree is to the right in the photograph. – photograph taken in 2009*)

Having then been withdrawn at the end of that April to the areas of Mailly-Maillet and Louvencourt where they would be based for the next two months, the Newfoundlanders had soon been preparing for the upcoming British campaign of that summer, to be fought on the ground named for the languid, meandering river, *the Somme*, that flowed – and still does so today – through the region.

If there is one name and date in Newfoundland history which is etched in the collective once-national memory, it is that of Beaumont-Hamel on July 1 of 1916; and if any numbers are remembered, they are those of the eight-hundred who went over *the top* in the third wave of the attack on that morning, and of the sixty-eight unwounded present at muster some twenty-four hours later\*.



(Preceding page: A view of Hawthorn Ridge Cemetery Number 2 in the Newfoundland Memorial Park at Beaumont-Hamel – photograph from 2009(?))

*\*Perhaps ironically, the majority of the Battalion's casualties was to be incurred during the advance from the third line of British trenches to the first line from where the attack proper was to be made, and while struggling through British wire laid to protect the British positions from any German attack.*

There are other numbers of course: the fifty-seven thousand British casualties incurred in four hours on that same morning of which nineteen-thousand were recorded as having been...*killed in action...or...died of wounds.*

It was to be the greatest disaster ever in the annals of the British Army...and, perhaps just as depressing, the carnage of the...*First Battle of the Somme...*was to continue for four and a half months.



(Right above: *Beaumont-Hamel is a commune, not a village.* – photographs from 2010 & 2015)

*In fact, Beaumont-Hamel was a commune – it still exists today – at the time comprising two communities: Beaumont, a village on the German side of the lines, and Hamel which was behind those of the British. No-Man's-Land, on which the Newfoundland Memorial Park lies partially today, was on land that separated Beaumont from Hamel.*



(Right: *A grim, grainy image purporting to be Newfoundland dead awaiting burial after Beaumont-Hamel* – from...?)

After the events of the morning of July 1, 1916, such had then been the dire condition of the attacking British forces that it had been feared that any German counter-assault might well annihilate what had managed to survive of the British Expeditionary Force on *the Somme.*

The few remnants of the Newfoundland Battalion – and of the other depleted British units – had thus remained in the trenches perhaps fearing the worst, and at night searching for the wounded and burying the dead. It was to be July 6 before the Newfoundlanders were to be relieved from the forward area and to be ordered withdrawn to Englebelmer.

There were then a further two days before the unit had marched further again to the rear area and to billets in the village of Mailly-Maillet.



(continued)



(Preceding page: *The re-constructed village of Mailly-Maillet – the French Monument aux Morts in the foreground - is twinned with the community of Torbay, St. John's East. – photograph from 2009*)

There on July 11-12, a draft of one-hundred twenty-seven re-enforcements – a second source cites one-hundred thirty – had reported *to duty*. They had been the first to arrive following the events at Beaumont-Hamel but even with this additional man-power, the Regimental War Diary records that on the 14<sup>th</sup> of July, 1916, the 1<sup>st</sup> Battalion was still to number only... *11 officers and 260 rifles*...after the holocaust of Beaumont-Hamel, just one-quarter of establishment battalion strength.

And, as seen in an earlier paragraph, Private Mitchelmore had been one of that first draft arriving from Rouen.

\* \* \* \* \*

Of course, the 1<sup>st</sup> Battalion of the Newfoundland Regiment had not been the only unit in the British Army to have incurred horrific losses on July 1, 1916, even though it had indeed been one of the most devastated. But even with its depleted numbers, the Battalion was needed and, after that first re-enforcement, it had almost immediately again been ordered to man the trenches of the front line: as of July 14 the Newfoundlanders began another tour in the trenches where...*we were shelled heavily by enemy's 5.9 howitzers and a good deal of damage was done to the trenches* (excerpt from the 1<sup>st</sup> Battalion War Diary).

On July 27-28 of 1916, the Newfoundland Battalion - still under establishment battalion strength at only five-hundred fifty-four strong – maybe even fewer - even after a second and a third draft of further re-enforcements – would move northwards and enter into the *Kingdom of Belgium* for the first time.

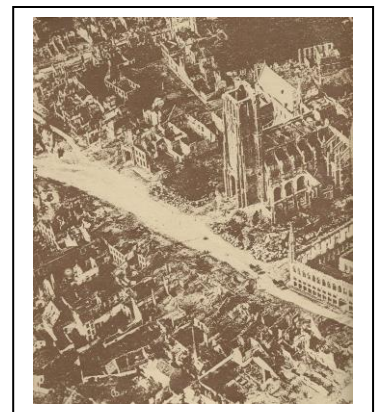
(Right: *The entrance to 'A' Company's quarters – obviously renovated since that time - in the ramparts of the city of Ypres when it was posted there in 1916 – photograph from 2010*)



The unit had been ordered to the *Ypres Salient*, one of the most dangerous pieces of real estate on the entire *Western Front*, there to continue to re-enforce and to re-organize after the ordeal of Beaumont-Hamel.

*The Salient* – close to the front lines for almost the entire fifty-two month conflict - was to be relatively quiet during the time of the Newfoundlanders' posting there; yet they nonetheless would incur casualties, a number – fifteen? - of them fatal.

(Right: *An aerial view of Ypres, taken towards the end of 1916: it is described as the 'Ville morte'.* – from *Illustration*)



\* \* \* \* \*

(continued)

During this Belgian episode Private Mitchelmore would be reported as having been...*wounded*...on August 9. Since July 30 the Newfoundlanders, quartered in Ypres, had frequently been both shelled and heavily gassed.

Private Mitchelmore had, in fact succumbed to an attack of *shell shock*\*.

*\*This was a phenomenon new to the medical services personnel, many of whom initially were not convinced that it was a genuine problem. This led to it being ignored in many instances and indeed even being treated as an excuse by the soldiery for possible dereliction of duty.*

At first evacuated to the 88<sup>th</sup> Field Ambulance, he was almost immediately transferred – on the same day - to the Divisional Rest Station, to remain there until returning...*to duty*...with his unit on August 26<sup>th</sup>. Private Mitchelmore then was to serve continuously until the end of the Newfoundland Battalion's posting to the *Ypres Salient*.

\* \* \* \* \*

On October 8, after having served in Belgium for some ten weeks, the Newfoundland Battalion would be ordered to return south and was transported back into France, and back into the area of – and the...*First Battle of – the Somme*.

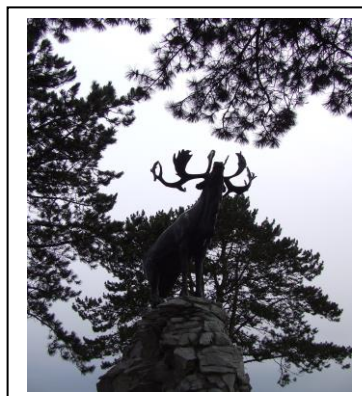


Only four days after the unit's return to France from Belgium, on October 12 of 1916, the 1<sup>st</sup> Battalion of the Newfoundland Regiment was again to be ordered to the offensive; it was at a place called Gueudecourt, the vestiges of a village some dozen or so kilometres to the south-east of Beaumont-Hamel.

The encounter was to prove to be another ill-conceived and costly affair – two hundred and thirty-nine casualties all told - for little gain.

(Right above: *This is the ground over which the 1<sup>st</sup> Battalion advanced and then mostly conceded at Gueudecourt on October 12. Some few managed to reach the area where today stand the copse of trees and the Gueudecourt Caribou, on the far right horizon.* – photograph from 2007)

(Right: *The Caribou at Gueudecourt stands at the furthest point of the Newfoundland Battalion's advance of October 12, 1916.* – photograph from 2012)



The son of Austin Mitchelmore\*, former fisherman, deceased of tuberculosis in August of 1919 - to whom he had allocated a daily allowance of sixty cents from his pay - and of Elizabeth Martha Mitchelmore (née *Genge*\*, deceased in July of 1903, also of tuberculosis) of Green Island Cove in the District of St. Barbe, he was also brother to Richard, Amelia, Emmanuel and Christopher.

(continued)

***\*The couple was married on November 8, 1892; however, the marriage was not registered until June 17 of 1895. After the death of Mary, Austin may have remarried, on this second occasion to Selina Stevens on January 2, 1908.***

Two cousins were to serve in the 1<sup>st</sup> Battalion of the Newfoundland Regiment: #2872, Private George Mitchelmore, ***missing in action...then after only four days re-recorded as having been...killed in action on April 23, 1917, at Les Fosses Farm***; and to #2873, Private Samuel Mitchelmore...***killed in action...at Saily-Saillisel in early March of the same year (see elsewhere in these files).***



Private Isaac Mitchelmore was reported as...***missing in action...on October 12, 1916, during the assault at Gueudecourt during the...First Battle of the Somme. Some thirty weeks later, on or about May 4, 1917, he was officially...presumed dead.***

(Right above: ***This War Memorial, erected by the Mitchelmore Members Branch Number 55 to honour the sacrifice of those from Labrador and the District of St. Barbe, stands by the side of the Northern Peninsula Highway. – photograph from 2020 – with thanks to Wade Greeley who noticed it.***)

Isaac Mitchelmore had enlisted at a ***declared*** twenty-two years and five months of age: date of birth in Green Island Cove, Newfoundland, April 6, 1893 (from the Newfoundland Birth Register).

***\*Austin Mitchelmore married a second time, on January 2, 1908 (confirmation?), his second wife's Christian name being Selina Stevens.***

Private Isaac Mitchelmore was entitled to the British War Medal (on left) and also to the Victory Medal (Inter-Allied War Medal).



The above dossier has been researched, compiled and produced by Alistair Rice. Please email any suggested amendments or content revisions if desired to ***criceadam@yahoo.ca***. Last updated – February 2, 2023.